

SEWING

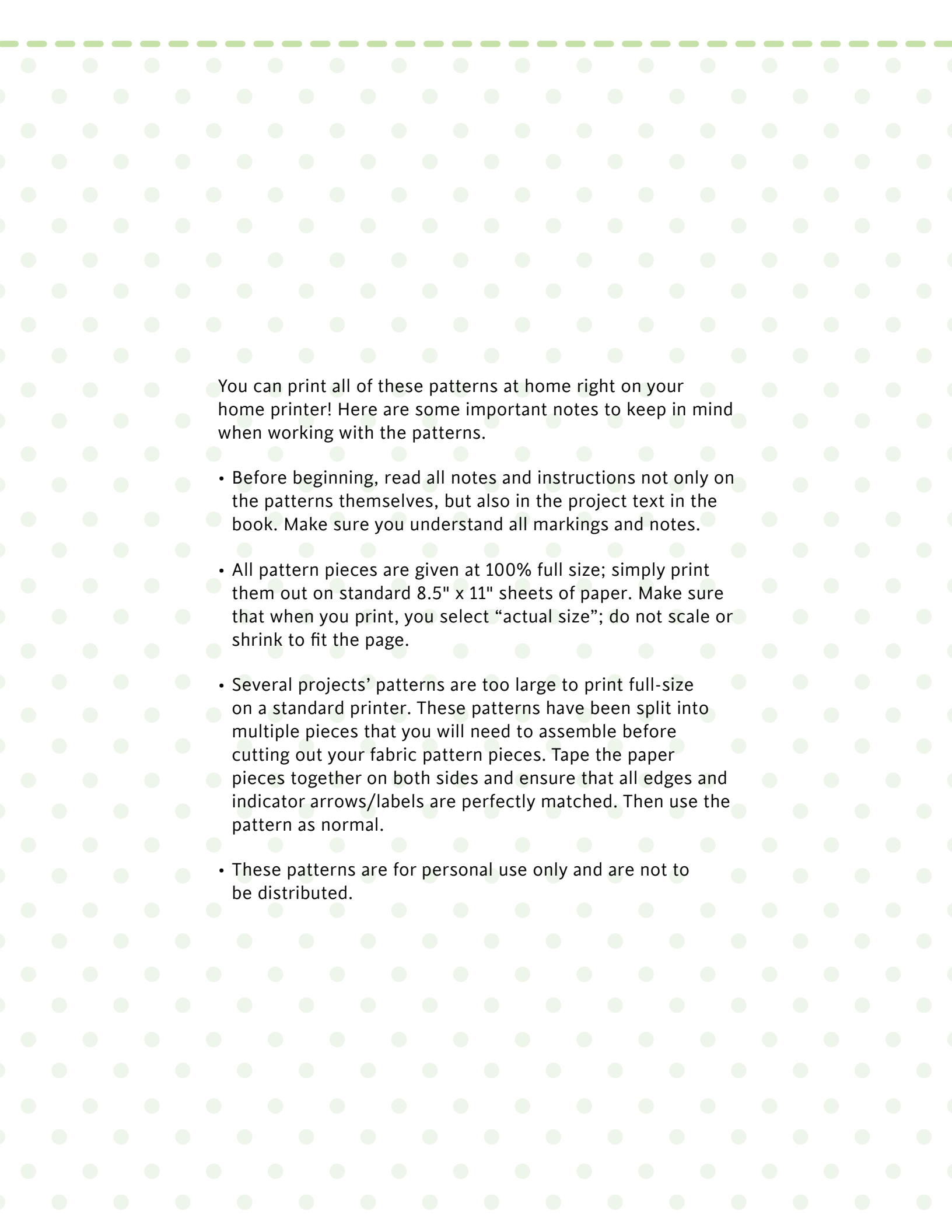
Face Masks, Scrub Caps, Arm Slings, and More

Practical Projects for Comfort and Care

Angie Herbertson

Print-at-Home Patterns

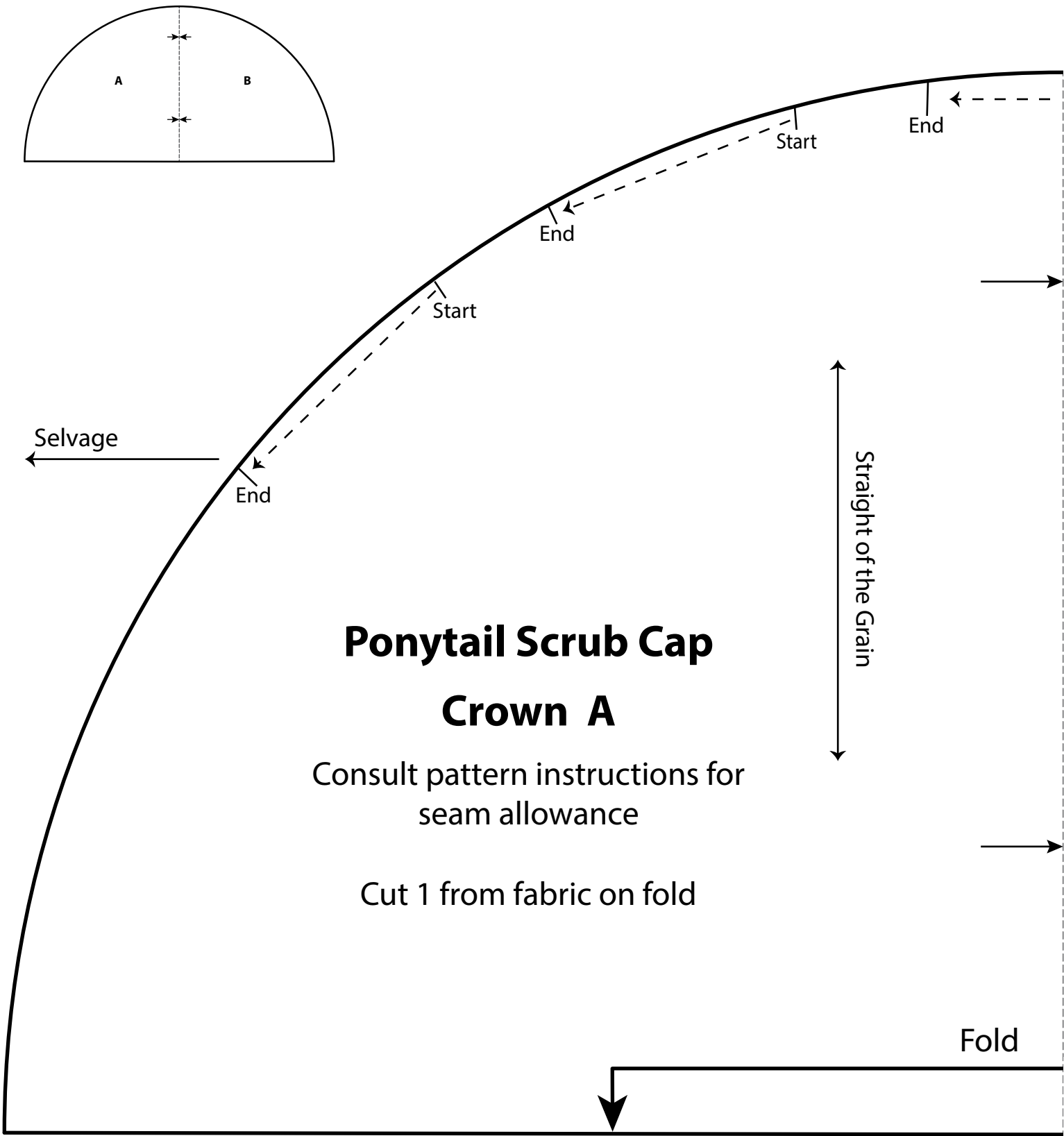
Landauer Publishing



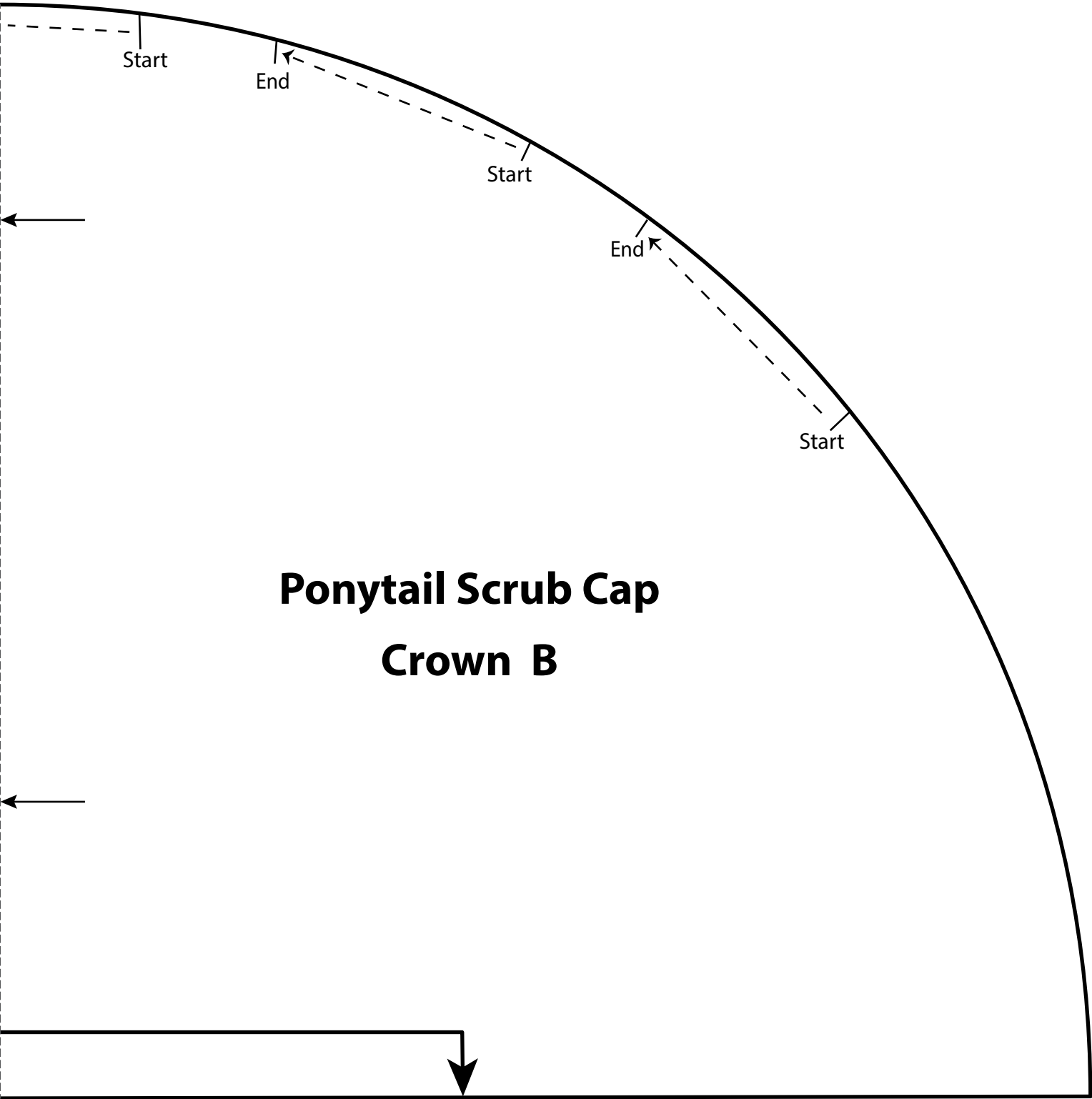
You can print all of these patterns at home right on your home printer! Here are some important notes to keep in mind when working with the patterns.

- Before beginning, read all notes and instructions not only on the patterns themselves, but also in the project text in the book. Make sure you understand all markings and notes.
- All pattern pieces are given at 100% full size; simply print them out on standard 8.5" x 11" sheets of paper. Make sure that when you print, you select "actual size"; do not scale or shrink to fit the page.
- Several projects' patterns are too large to print full-size on a standard printer. These patterns have been split into multiple pieces that you will need to assemble before cutting out your fabric pattern pieces. Tape the paper pieces together on both sides and ensure that all edges and indicator arrows/labels are perfectly matched. Then use the pattern as normal.
- These patterns are for personal use only and are not to be distributed.

Ponytail Scrub Cap
Align pieces at arrows as shown and tape.



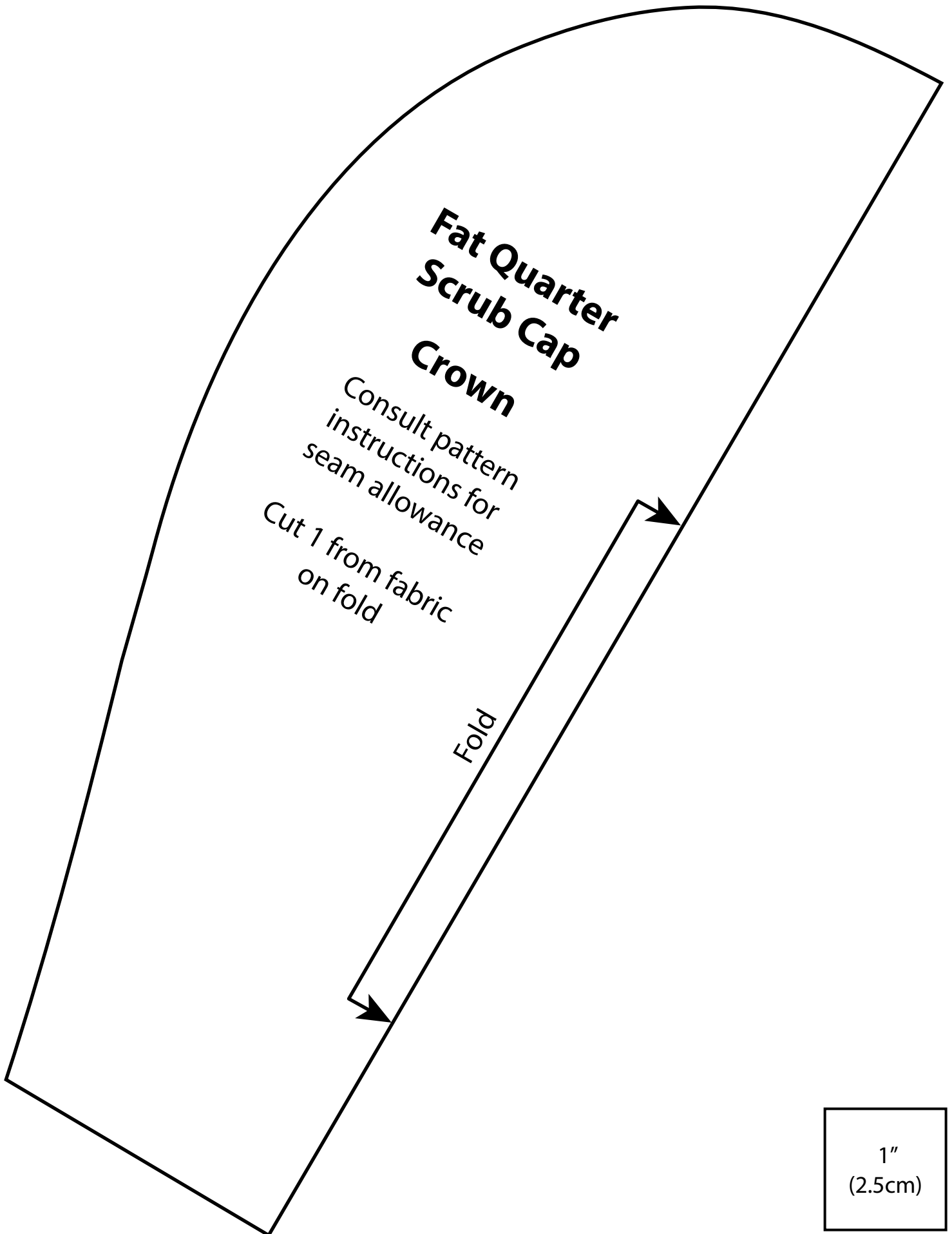
1"
(2.5cm)



**Ponytail Scrub Cap
Crown B**

1"
(2.5cm)

Fat Quarter Scrub Cap



**Fat Quarter
Scrub Cap
Ties**

Consult pattern
instructions for
seam allowance

Cut 2 from fabric

1"
(2.5cm)

Fat Quarter Scrub Cap

Front Brim

Consult pattern instructions
for seam allowance

Cut 1 from fabric on fold

Fold

1"
(2.5cm)

Fat Quarter Scrub Cap

Side Brim

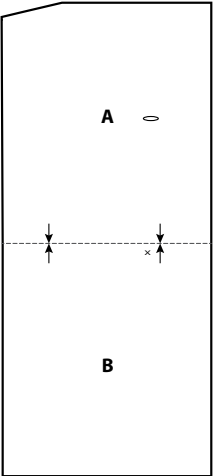
Consult pattern instructions
for seam allowance

Cut 2 from fabric

Tack
ties
here

Cooper Unisex Scrub Cap

Align pieces at arrows as shown and tape.



Cooper Unisex Scrub Cap

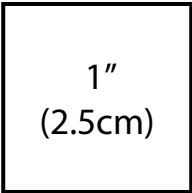
Back Brim A

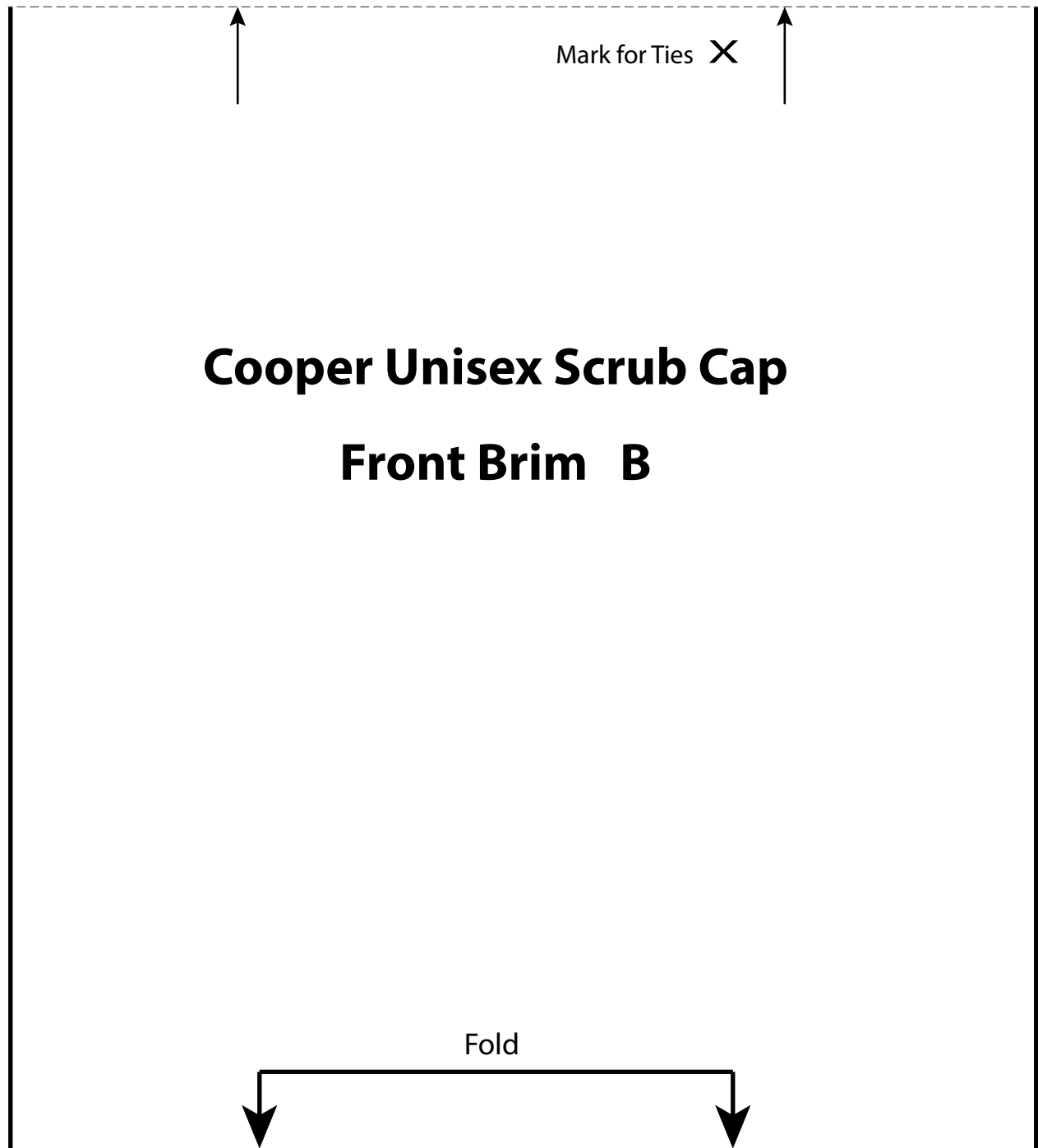
Consult pattern instructions
for seam allowance

Cut 1 from fabric on fold



Mark for Buttonholes





1"
(2.5cm)

Front of Crown

Cooper Unisex Scrub Cap Crown

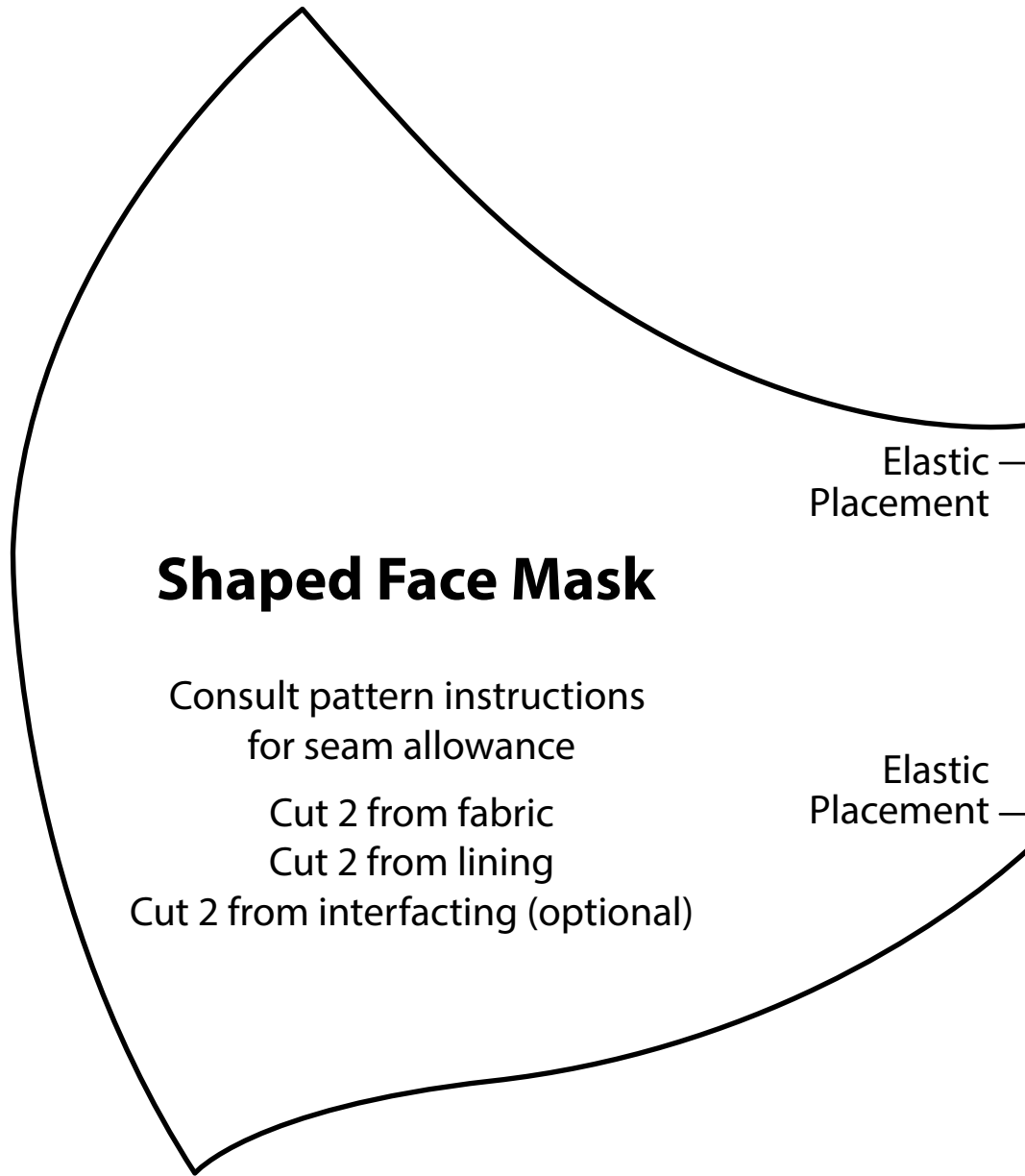
Consult pattern instructions
for seam allowance

Cut 1 from fabric

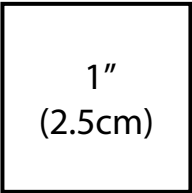
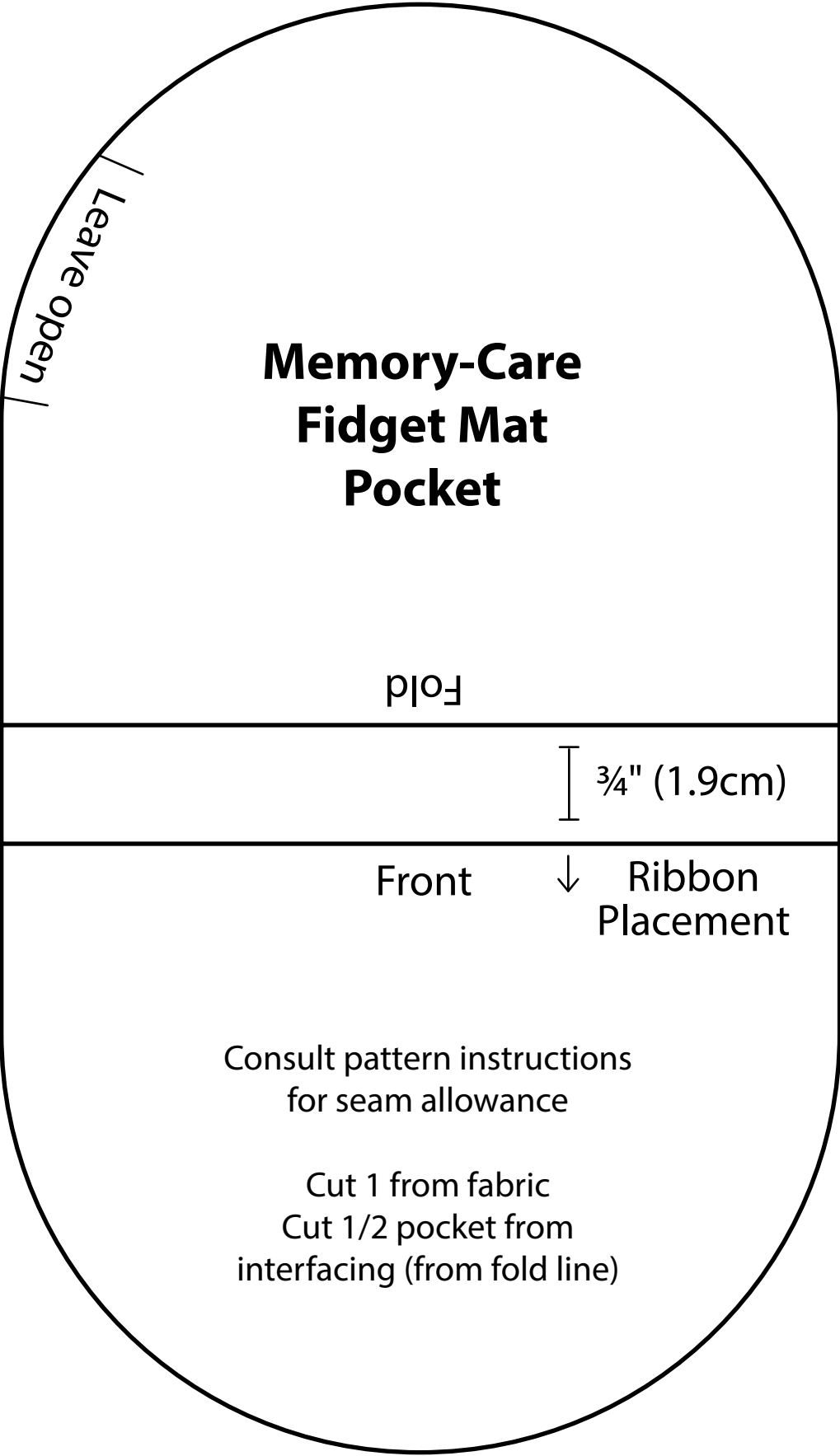
Back of Crown

1"
(2.5cm)

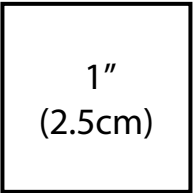
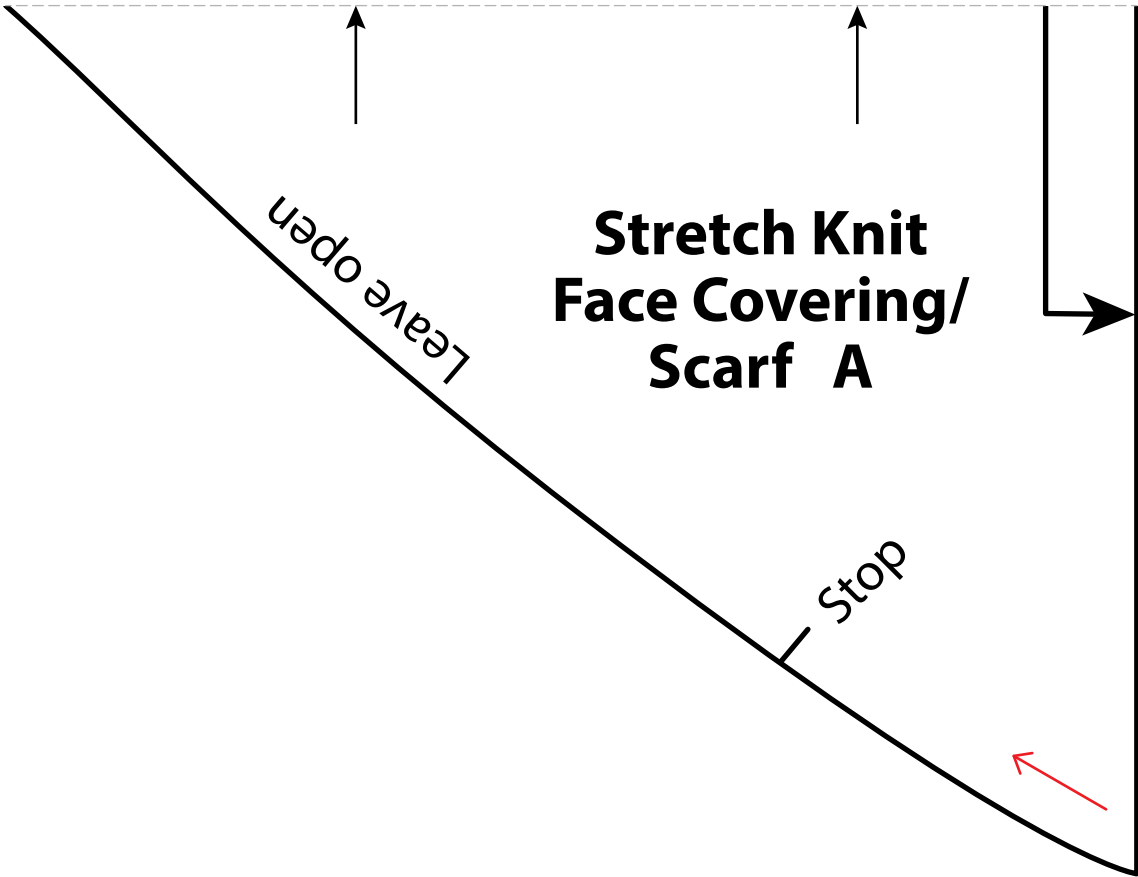
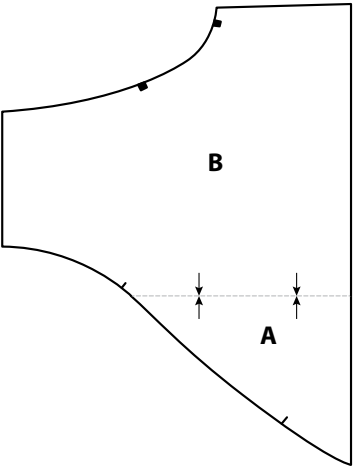
Shaped Face Mask

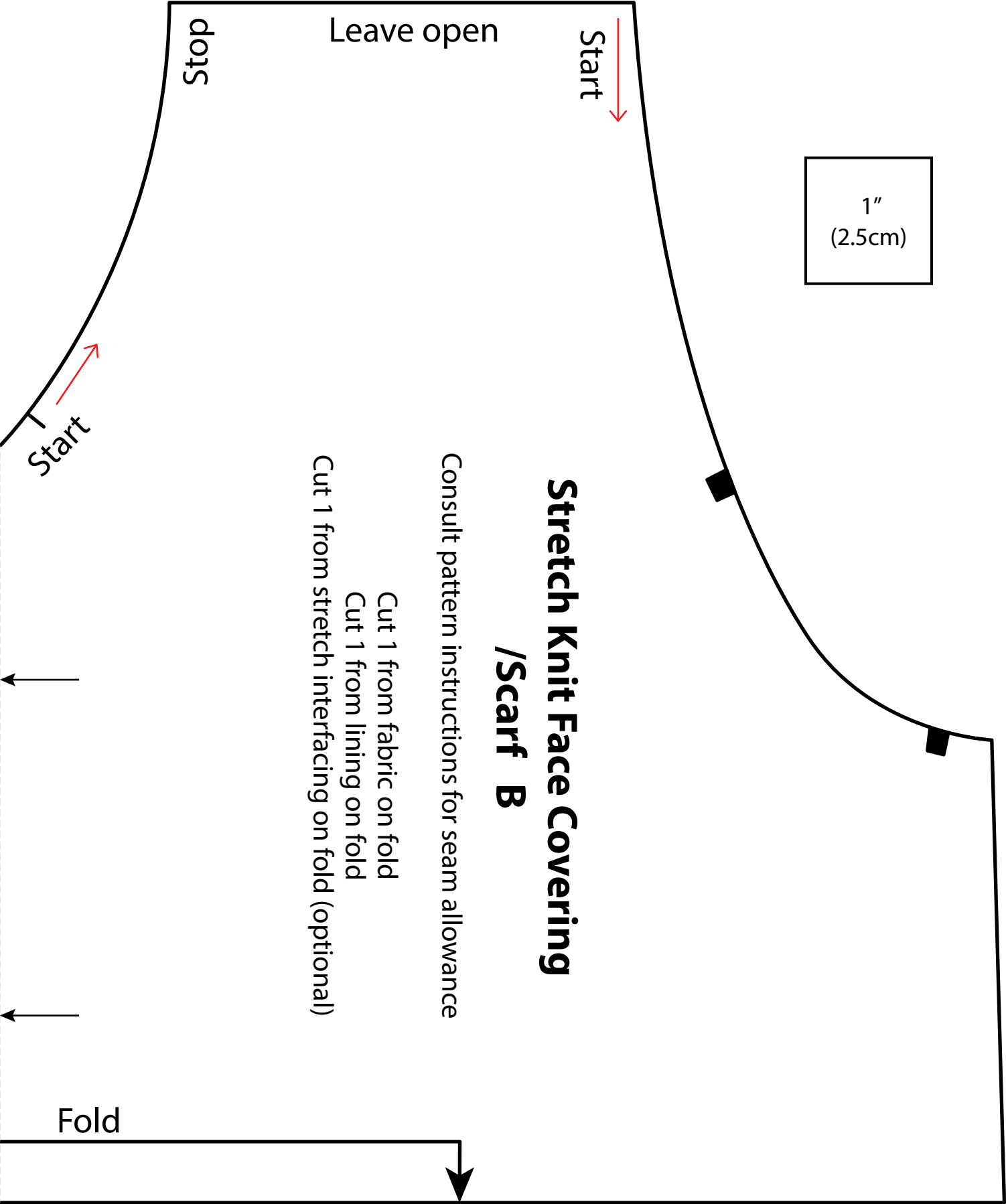


1"
(2.5cm)

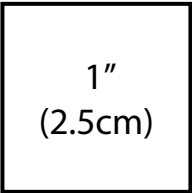
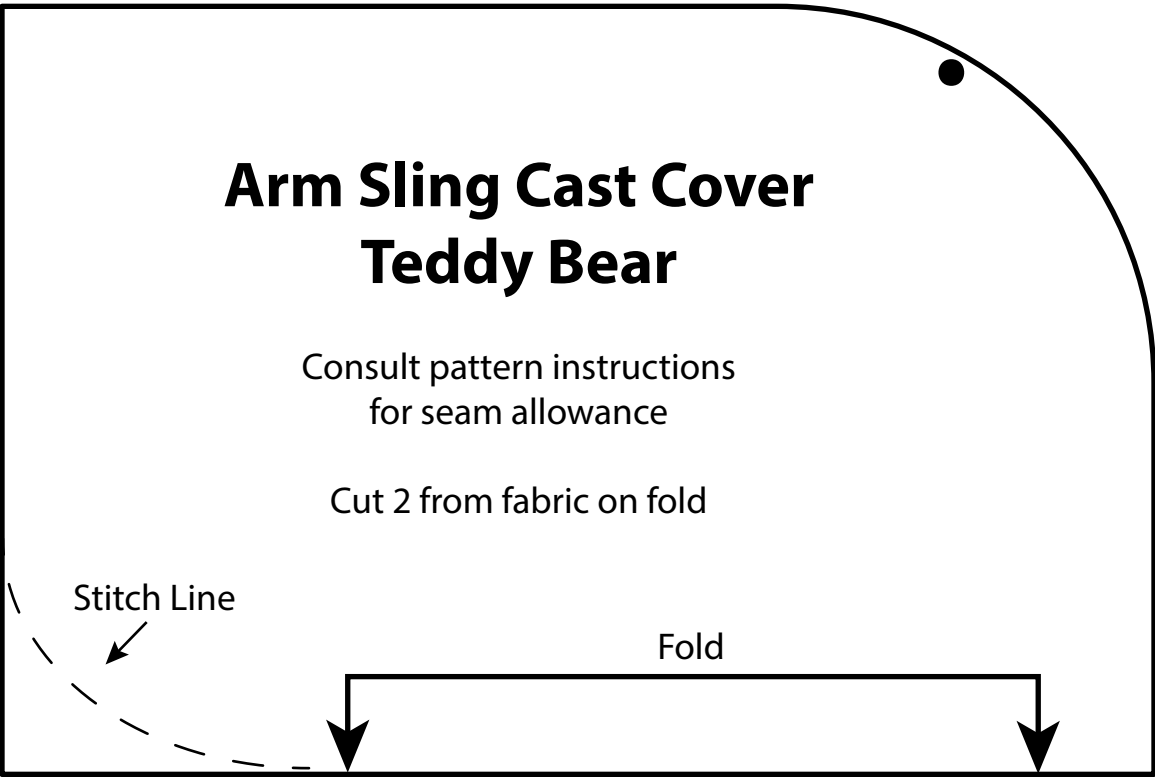
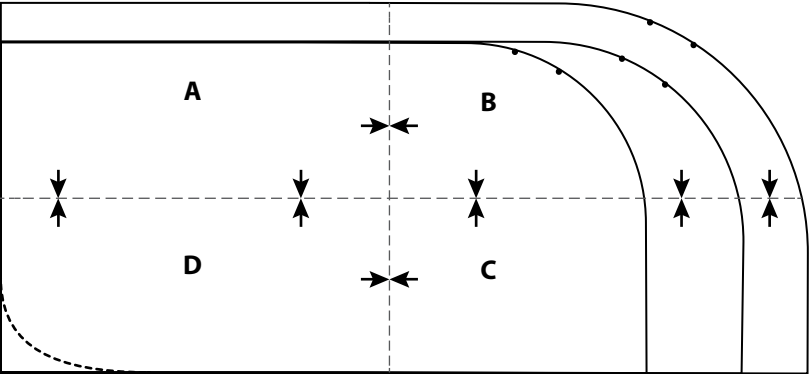


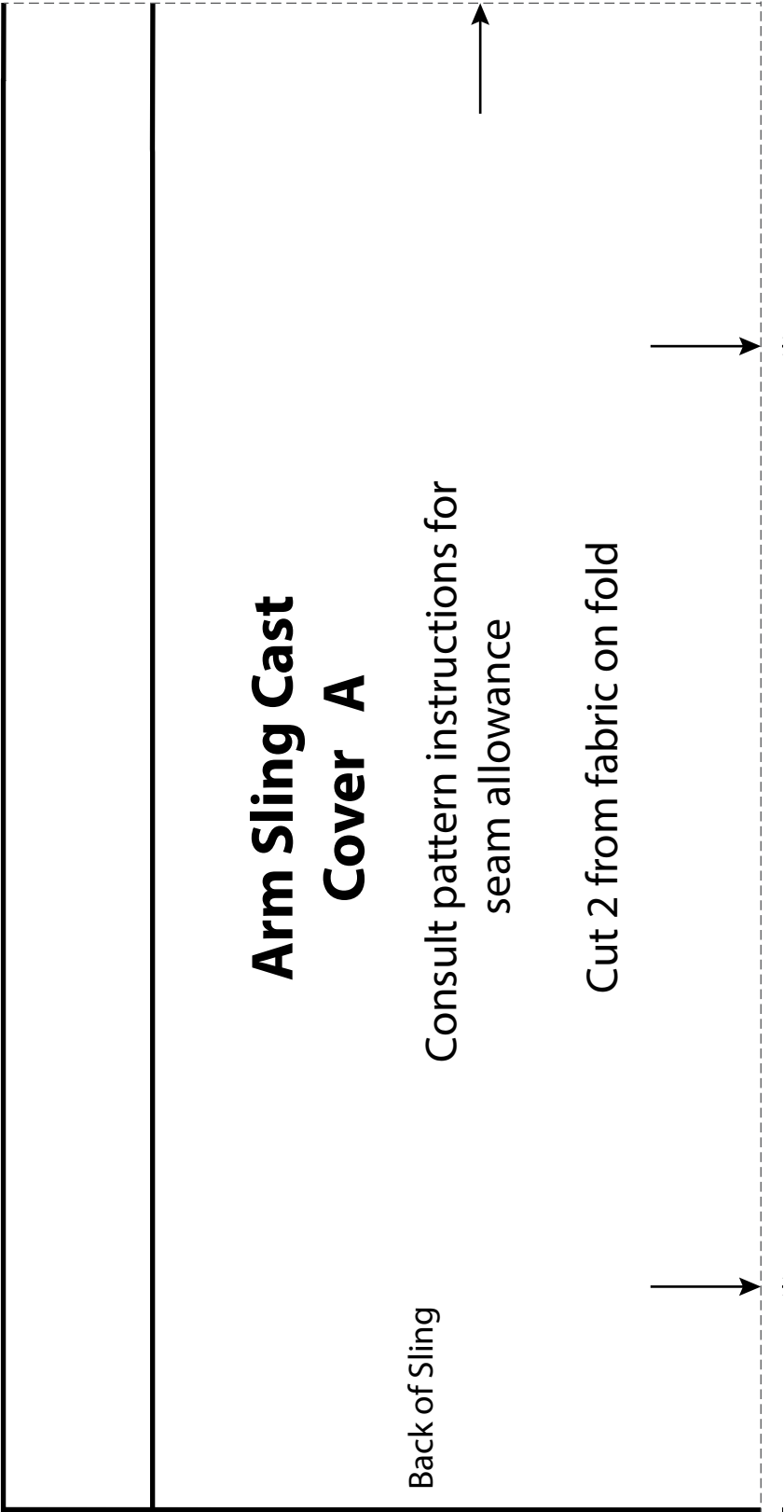
Stretch Knit Face Covering/Scarf
Align pieces at arrows as shown and tape.



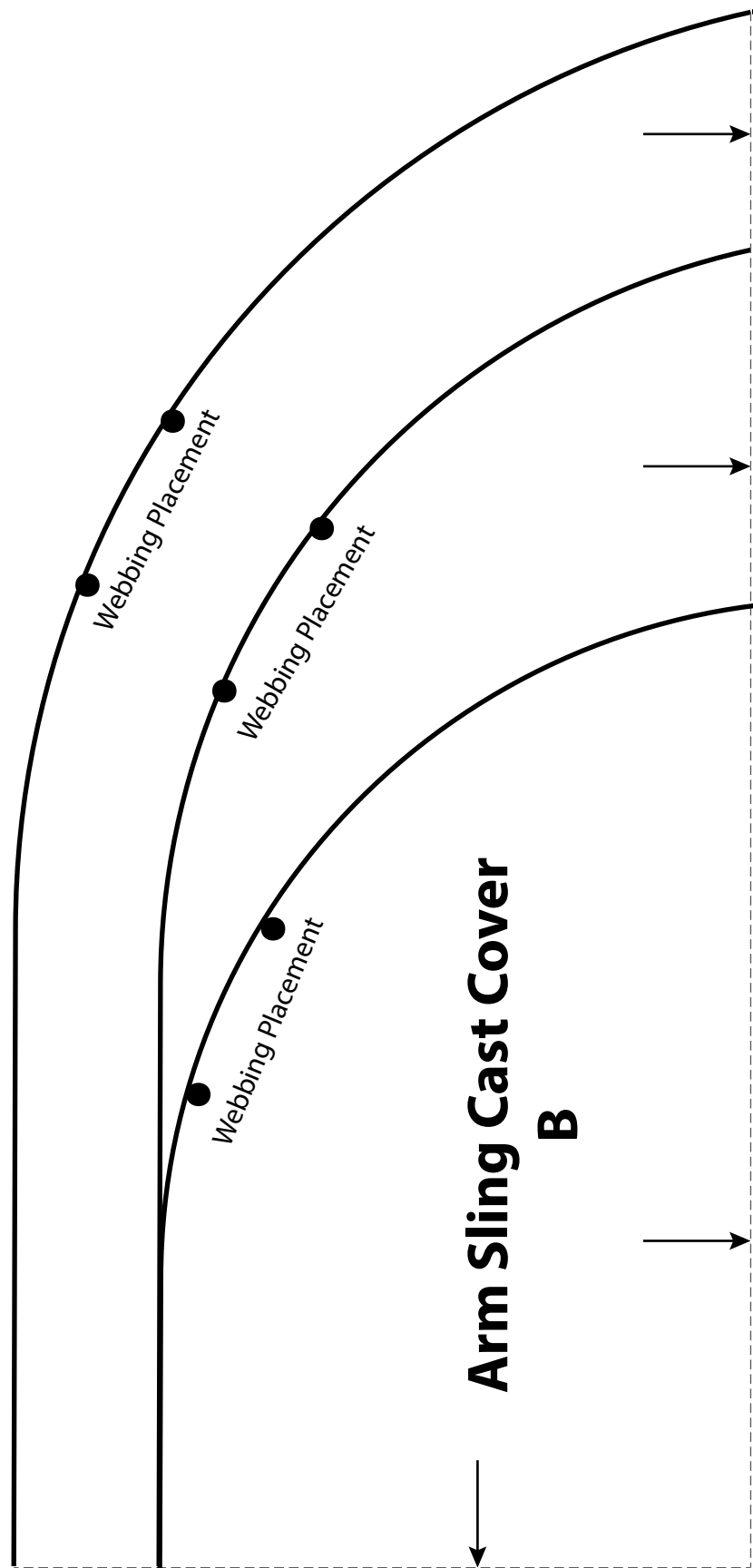


Arm Sling Cast Cover
Align pieces at arrows as shown and tape.





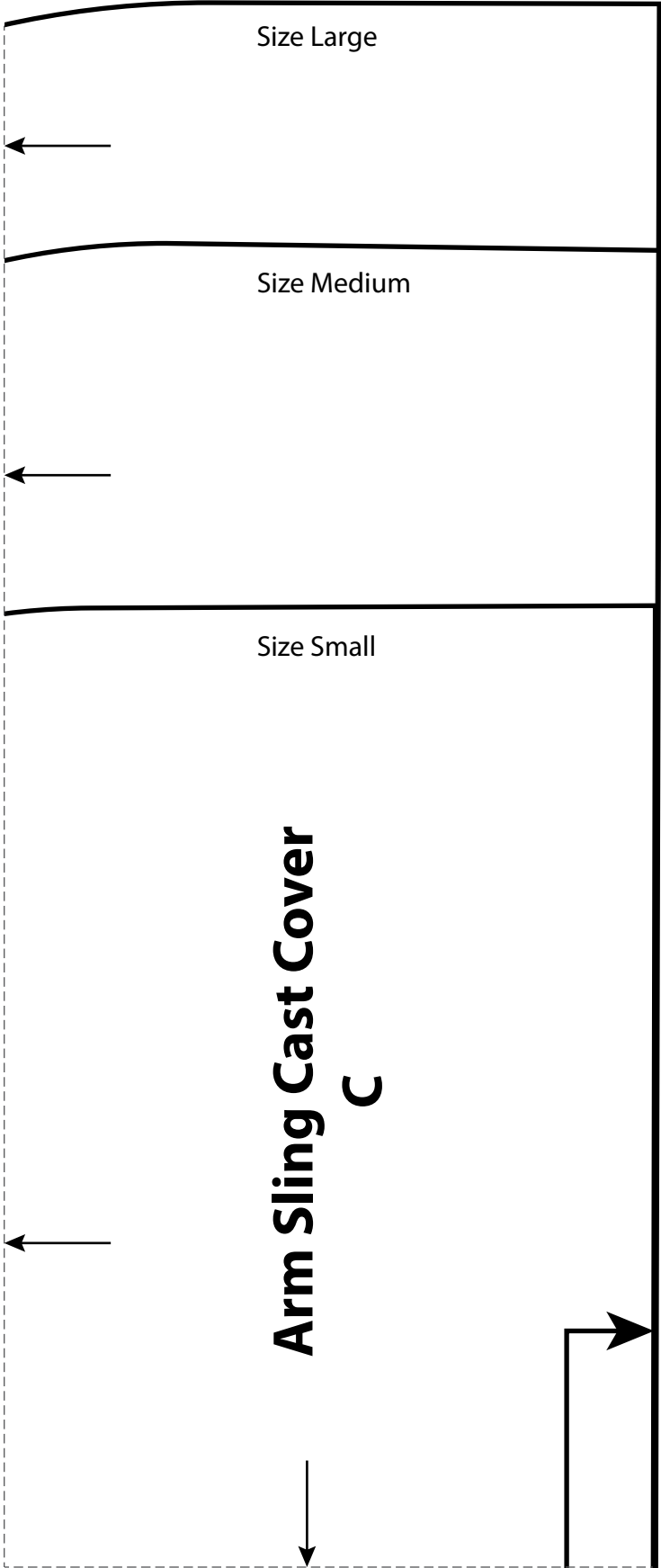
1"
(2.5cm)



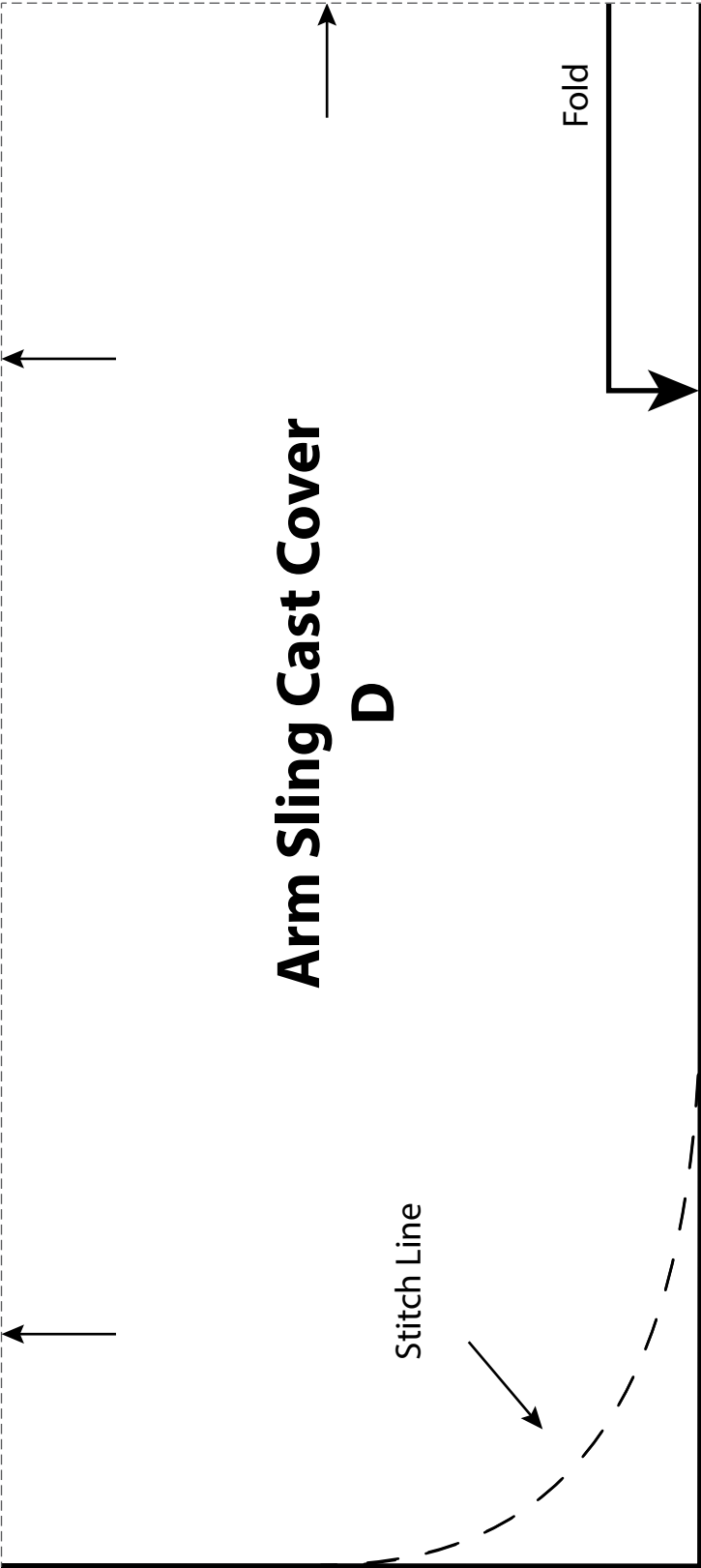
Arm Sling Cast Cover
B

1"
(2.5cm)

Arm Sling Cast Cover

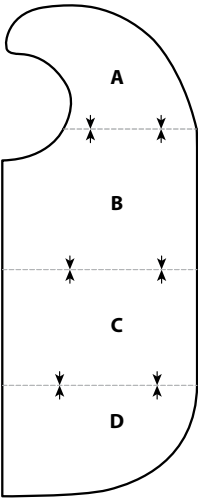


1"
(2.5cm)



1"
(2.5cm)

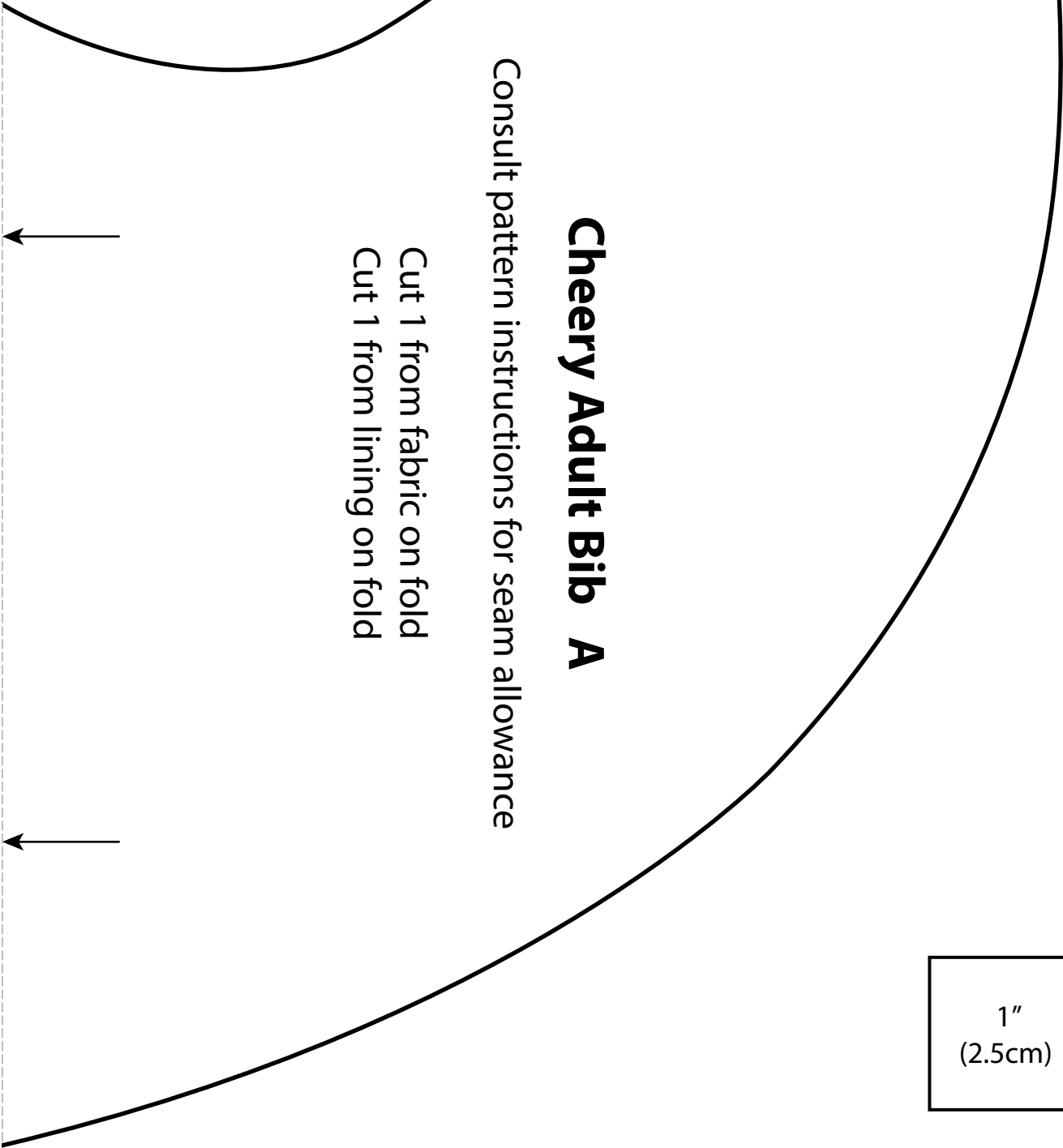
Cheery Adult Bib
Align pieces at arrows as
shown and tape.



Cheery Adult Bib A

Consult pattern instructions for seam allowance

Cut 1 from fabric on fold
Cut 1 from lining on fold



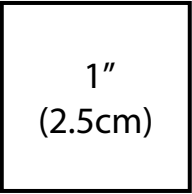
1"
(2.5cm)

Cheery Adult Bib

1"
(2.5cm)

Cheery Adult Bib B

Cheery Adult Bib

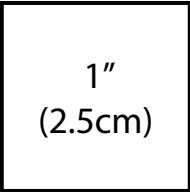


Cheery Adult Bib C

Fold



Cheery Adult Bib



Cheery Adult Bib D

